

FLEXIVISION® 40

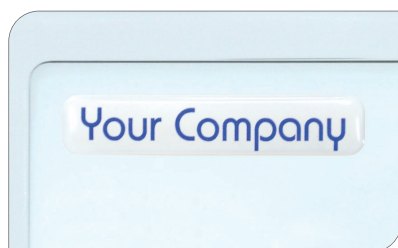
Controller 4K UHD USB Image/Video Capture



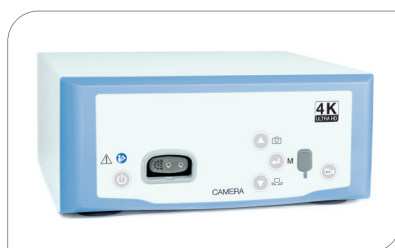
Centerpiece of a high-end 4K UHD endoscopic camera system. 4K and Full HD outputs for maximum flexibility. Optimized settings for laparoscopy, arthroscopy, gynecology, urology, ENT, fiberscopes and neuroendoscopy.

- Outstanding performance
 - 4K UHD imaging (3840 x 2160, 50/60p)
 - BT2020, large UHD color space
- Image/video capturing via USB (Full HD)
- Multi-connectivity
 - 4K UHD: camera head 4K UHD zoom
 - Full HD: camera head full HD zoom, camera head full HD fix focal length, camera head full HD 90° angled
- Video algorithms – with Picture out of Picture mode (POP)
 - Color Shift 1 + 2 – spectral colors can be shifted and exchanged in order to enhance vessels and tissue structures
 - Selective Color Enhancement (SCE) – for a much improved representation of the vessels and the tissue structure
 - Smoke reduction – for a better view during dissection technologies (e.g. HF)
 - Grid removal – reduces the honeycomb structure of image bundle endoscopes
- SCHÖLLY MIS-Bus interface for automatic and manual light source control via camera head

OEM PRODUCTS – PUT YOUR STAMP ON OUR EXPERTISE



Logo/Labeling



Front frame color



Button color and button illumination color



SCHÖLLY FIBEROPTIC GMBH
Robert-Bosch-Strasse 1-3
79211 Denzlingen, Germany

Phone: +49 7666 908-0
medical-endoscopy@schoelly.de
www.schoelly.de/ME

FLEXIVISION® 40

Controller 4K UHD USB Image/Video Capture



TECHNICAL DATA

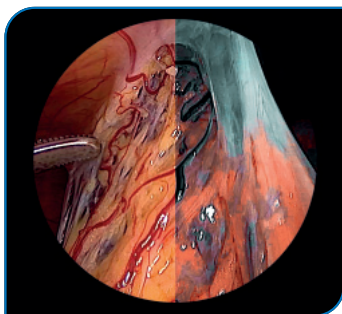
DESCRIPTION	ITEM NUMBER
Controller 4K UHD USB Image/Video Capture	95-3980

TECHNICAL DATA	
Operation control panel	On-Off, menu, white balance, photo, video
Interfaces	1 x MIS-Bus 2 x Remote IN (e.g. foot control switch) 2 x Remote OUT (e.g. recorder, printer) 2 x USB (e.g. image/video capture - front, keyboard - back)
Standard compliance	IEC 60601-1
Electromagnetic compatibility	IEC/EN 60601-1-2
Directive compliance	CE-mark
Dimensions	295 x 129.5 x 355 mm (W x H x D)
Weight	approx. 7 kg
Supply voltage	100 - 240 V~, 50/60 Hz
Power consumption	0.8 - 0.4 A
Protection class acc. to IEC 60601-1	Protection class 1
Degree of protection	IP21
Classification within the meaning of applicable EU guidelines	Class 1 medical device
Classification as per IEC/CISPR 11	Group 1 Class A

PLEASE SEE ADDITIONAL DATA SHEETS

FlexiVision Camera Head 4K UHD Zoom | FlexiLux 300 LED Light Source

DETAILS



Video algorithms (e.g. Color Shift 1)



Automatic light control

A perfect match for perfect colors

BT2020 & CRI >90

Large camera color space BT2020 High CRI Ra >90

FlexiVision 40 camera with FlexiLux 300 LED light source

Technical specifications are subject to change. The information is not legally binding. The contents are only for information about our products. Reprint, in whole or in part, is not permitted. Medical devices are only allowed to be marketed and used in countries where they have been approved for sales by regulatory authorities. For information on the available market access please contact us.

MEDICAL ENDOSCOPY
MPA319-000-01-ME
Version: D
12-May-2021