

FLEXIVISION® NIR FI

Camera Control Unit (CCU) 4K UHD



SCHÖLLY FIBEROPTIC GMBH
Robert-Bosch-Strasse 1-3
79211 Denzlingen, Germany

Phone: +49 7666 908-0
medical-endoscopy@schoelly.de
www.schoelly.de/ME

MEDICAL ENDOSCOPY
MPA331-000-01-ME
Version: 0
01-Dec-2021

FLEXIVISION® NIR FI

Camera Control Unit (CCU) 4K UHD

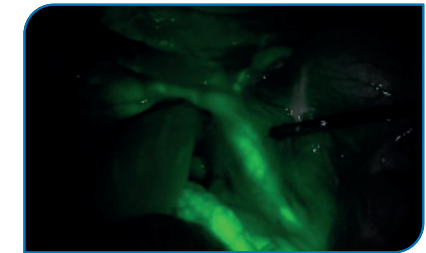


Centerpiece of a high-end 4K UHD endoscopic camera system and for NIR FI applications with NIR FI products made by SCHÖLLY.

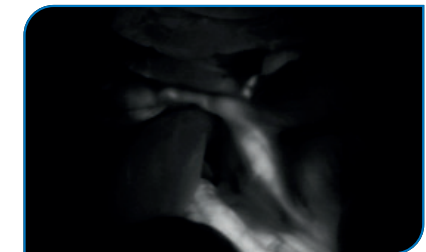
- NIR FI – Near-infrared fluorescence imaging
 - NIR FI green mode: visualization of the NIR fluorescence signal as overlay onto a gray scaled white light image for high-contrast visualization of targeted tissue structures
 - NIR FI contrast mode: visualization of the pure NIR fluorescence signal indicated by the color white and all other areas of the image appear dark for maximum contrast
 - NIR FI intensity mode: visualization of the NIR fluorescence signal intensity indicated by a multi-color scale
 - Picture out of Picture mode (PoP); displays images next to each other
 - NIR FI Light source control
 - Activation of NIR laser for NIR fluorescence imaging
 - Fully automatic light control through MIS-Bus interface
- Outstanding performance
 - 4K UHD imaging (3840 x 2160, 50/60p)
 - BT2020, large 4K UHD color space
- Integrated photo capture and video recording on external storage media via USB
- Video algorithms for white light imaging
 - Color Shift, Selective Color Enhancement, Smoke Reduction, Grid Removal
- Multi-connectivity
 - NIR FI: camera head NIR FI full HD zoom
 - 4K UHD: camera head 4K UHD zoom
 - Full HD: camera head full HD zoom, full HD 90° angled
- Footswitch
 - Control camera functionality

Fluorescence imaging only in combination with following SCHÖLLY NIR FI products: NIR FI Camera Head Full HD Zoom (95-3908), NIR FI Laparoscope 10 mm, 0° (11-0131nir) or 30° (11-0143nir), NIR FI Light Source (05-0761nir) and NIR FI Light Guide (05-0094l-nir)

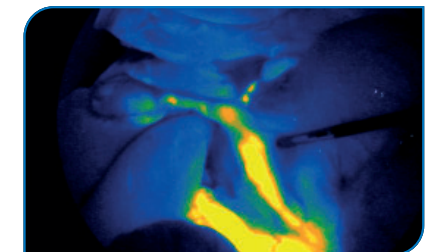
DETAILS



NIR FI GREEN MODE



NIR FI CONTRAST MODE



NIR FI INTENSITY MODE



SCHÖLLY FIBEROPTIC GMBH
Robert-Bosch-Strasse 1-3
79211 Denzlingen, Germany

Phone: +49 7666 908-0
medical-endoscopy@schoelly.de
www.schoelly.de/ME

MEDICAL ENDOSCOPY
MPA331-000-01-ME
Version: 0
01-Dec-2021

FLEXIVISION® NIR FI

Camera Control Unit (CCU) 4K UHD



TECHNICAL DATA

DESCRIPTION	ITEM NUMBER
NIR FI CCU 4K UHD	95-3985

TECHNICAL DATA	
Fluorescence imaging modes	NIR FI Green (Green fluorescence signal overlaid onto grayscale white light image) NIR FI Contrast (White fluorescence signal with black background) NIR FI Intensity (Multicolored fluorescence signal overlaid onto grayscale white light image)
Operation control panel	On-Off, menu, white balance, photo, video
Video outputs 4K UHD Video outputs Full HD	1 x 4K /UHD 3840 x 2160p (4x 3G-SDI) 2 x 3G-SDI, 2 x DVI
Interfaces	1 x MIS-BUS 2 x Remote IN (e.g., foot control switch) 2 x Remote OUT (e. g., recorder, printer) 2 x USB (e. g., image/video capture – front, keyboard – back)
Dimensions	295 x 129.5 x 355 mm (W x H x D)
Weight	Approx. 7 kg
Standard compliance	IEC 60601-1
Electromagnetic compatibility	IEC/EN 60601-1-2
Directive compliance	CE-mark
Supply voltage	100 - 240 V ~ 50/60 Hz
Current consumption	1.2 - 0.5 A
Degree of protection	IP 21
Protection class acc. to IEC 60601-1	Protection class I
Classification within the meaning of applicable EU guidelines	Class I medical device
Classification as per IEC/CISPR 11	Group 1, Class A



SCHÖLLY FIBEROPTIC GMBH
Robert-Bosch-Strasse 1-3
79211 Denzlingen, Germany

Phone: +49 7666 908-0
medical-endoscopy@schoelly.de
www.schoelly.de/ME

Technical specifications are subject to change. The information is not legally binding.
The contents are only for information about our products. Reprint, in whole or in part, is not permitted.
Medical devices are only allowed to be marketed and used in countries where they have been approved
for sales by regulatory authorities. For information on the available market access please contact us.

MEDICAL ENDOSCOPY
MPA331-000-01-ME
Version: 0
01-Dec-2021

FLEXIVISION® NIR FI

Camera Control Unit (CCU) 4K UHD



OEM PRODUCTS – PUT YOUR STAMP ON OUR EXPERTISE

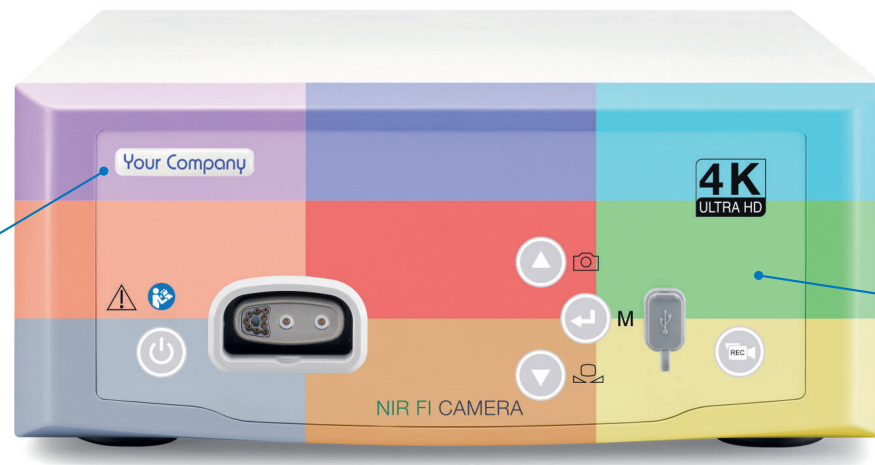
Individualization by customized 3D sticker

Camera Head

- n/a

Camera Control Unit

- 3D sticker with your company logo on front foil



Individualization by customized front panel and printing

Camera Head

- Your company logo

Camera Control Unit

- Frame style: wave front frame or thin front frame
- Socket frame: color
- Front foil design: color, logo
- Buttons: illumination color, button color
- Settings: boot logo, menu logo



OEM PRODUCTS

SCHÖLLY FIBEROPTIC GMBH
Robert-Bosch-Strasse 1-3
79211 Denzlingen, Germany

Phone: +49 7666 908-0
medical-endoscopy@schoelly.de
www.schoelly.de/ME

MEDICAL ENDOSCOPY
MPA331-000-01-ME
Version: 0
01-Dec-2021