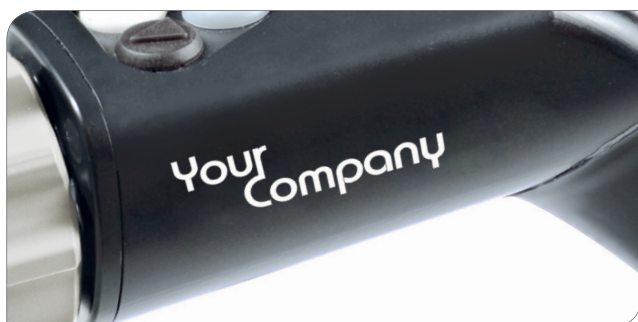




Exceptionally ergonomic Full HD fix focal length camera head for the FlexiVision camera platform. Lightweight, cost effective and especially suitable for applications with circular images of small endoscopes (e.g. arthroscopes, cystoscopes, fiber endoscopes).

- Outstanding performance
 - Full HD sensor resolution (1920 x 1080 pixels, progressive scan, 60 frames per second)
 - 3 x digital zoom
 - Lockable endoscope connection
- Time saving and useful presets
 - Optimized settings for laparoscopy, arthroscopy, gynecology, urology, ENT, fiberscopes, neuroendoscopy
 - Individually programmable and illuminated function keys
- Flexibility
 - All rigid, flexible or semi-flexible endoscopes with standard ocular can be connected

PRIVATE LABEL PRODUCTS - OUR EXPERTISE LABELED WITH YOUR NAME



Logo/Labeling



PRIVATE LABEL

SCHÖLLY FIBEROPTIC GMBH
Robert-Bosch-Strasse 1-3
79211 Denzlingen, Germany

Phone: +49 7666 908-0
Fax: +49 7666 908-380

www.schoelly.de/ME
info@schoelly.de

TECHNICAL DATA

DESCRIPTION	ITEM NUMBER
Camera Head Full HD Fix Focal Length	95-3902

TECHNICAL DATA	
Image sensor	1/3" CMOS, progressive scan
Sensor resolution	1920 x 1080, 50/60p
Function keys	3 individually programmable and illuminated keys
Endocoupler	For standard ocular, lockable
Focal length	f = 14.25 mm
Waterproof connection plug	Yes
Lockable endoscope connection	Yes
Length camera cable	3.5 m
Weight camera head (without cable)	200 g

ACCESSORIES

DESCRIPTION	ITEM NUMBER
Reprocessing tray for camera heads (tray with inlay to fix camera head)	95-4860

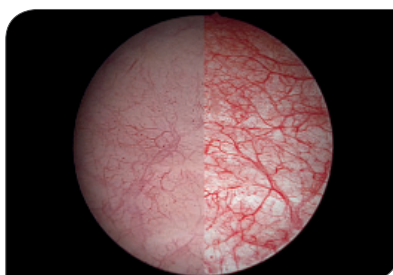
PLEASE SEE ADDITIONAL DATA SHEETS

FlexiVision Series Controllers with multi-connectivity | FlexiVision Camera Head Full HD Zoom | FlexiVision Camera Head Full HD 90° Angled | FlexiLux 200 LED Light Source | FlexiLux 300 LED Light Source

DETAILS



Multi-connectivity



Video algorithms
(e.g. SCE: Selective Color Enhancement)



Lockable endoscope connection

Technical specifications are subject to change. The information is not legally binding. The contents are only for information about our products. Reprint, in whole or in part, is not permitted. Medical devices are only allowed to be marketed and used in countries where they have been approved for sales by regulatory authorities. For information on the available market access please contact us.

MEDICAL ENDOSCOPY
MPA312-000-01-ME
Version: A
2019-Apr-11