

# FLEXILUX® NIR FI

## LED Light Source and Light Guide



SCHÖLLY FIBEROPTIC GMBH  
Robert-Bosch-Strasse 1-3  
79211 Denzlingen, Germany

Phone: +49 7666 908-0  
medical-endoscopy@schoelly.de  
www.schoelly.de/ME

MEDICAL ENDOSCOPY  
MPA334-000-01-ME  
Version: 0  
01-Dec-2021

# FLEXILUX<sup>®</sup> NIR FI

## LED Light Source and Light Guide



### NIR FI LED LIGHT SOURCE

With NIR laser for optimal ICG excitation and with high color rendering index (CRI) for white light operation.

- NIR FI – Near-infrared fluorescence imaging
  - 805 nm NIR laser for optimal ICG excitation
- Outstanding light quality with CRI >90 for best color rendering in white light modus
- LCD display showing luminance level and status information
- Very silent device, virtually inaudible
- Fully automatic light control by NIR and FlexiVision 40 and 20 cameras through MIS-Bus interface
- Multi-light-guide adapter compatible to Storz, Wolf and Olympus light guides during white light operation

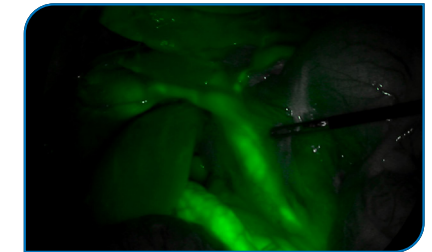
### NIR FI LIGHT GUIDE

- Specified equipment for NIR laser activation
- Class 1M laser output at distal end (endoscope tip)

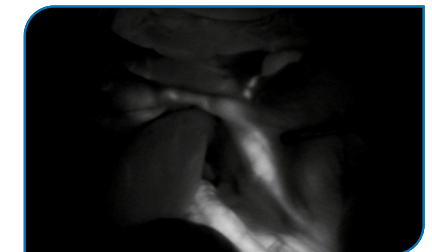
Fluorescence imaging only in combination with following SCHÖLLY NIR FI products:

NIR FI CCU 4K UHD (95-3985) or NIR FI CCU Full HD (95-3981), NIR FI Camera Head Full HD zoom (95-3908), NIR FI Laparoscope 10 mm, 0° (11-0131nir) or 30° (11-0143nir)

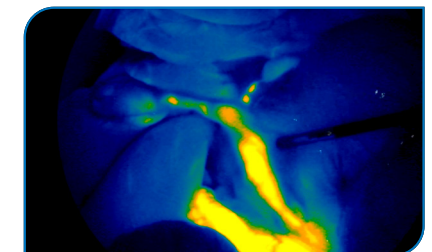
### DETAILS



NIR FI GREEN MODE



NIR FI CONTRAST MODE



NIR FI INTENSITY MODE



SCHÖLLY FIBEROPTIC GMBH  
Robert-Bosch-Strasse 1-3  
79211 Denzlingen, Germany

Phone: +49 7666 908-0  
medical-endoscopy@schoelly.de  
www.schoelly.de/ME

MEDICAL ENDOSCOPY  
MPA334-000-01-ME  
Version: 0  
01-Dec-2021

# FLEXILUX® NIR FI

## LED Light Source and Light Guide



### TECHNICAL DATA

DESCRIPTION	ITEM NUMBER
NIR FI Light Source	05-0761nir
NIR FI Light Guide 4.8 mm x 3000 mm	05-0094I-nir

TECHNICAL DATA LIGHT GUIDE	
Length	3.000 mm
Active diameter	4.8 mm
Classification within the meaning of applicable EU guidelines	Class I medical device
Applied part as per IEC 60601-1	CF

TECHNICAL DATA LIGHT SOURCE	
WHITE LIGHT OPERATION	
Illumination type	High power white light LED
Color Rendering Index	CRI Ra >90
Color temperature	5,600 K
Luminous flux	1,420 lm
Lifetime of the illuminant	>30,000 h
LASER OPERATION	
Laser wavelength	805 nm (NIR)
Maximum laser output	77 mW
Laser aperture for NIR radiation emission	Light guide end and endoscope tip
Laser Class as per IEC60825-1	Class 3R (light guide end) Class 1M (endoscope tip)
LIGHT SOURCE IN GENERAL	
Operation control panel	LCD Display with illuminated buttons
Standard compliance	IEC 60601-1
Electromagnetic compatibility	IEC/EN 60601-1-2
Directive compliance	CE-mark
Dimensions	295 x 130 x 355 mm (W x H x D)
Weight	8 kg
Supply voltage	100 - 240 V ~ 50/60 Hz
Current consumption	1.6 - 0.6 A
Degree of protection	IP 21
Appliance class as per IEC 60601-1	Class 1
Classification as per IEC/CISPR 11	Group 1, Class A
Applied part as per IEC 60601-1	Type CF defibrillation-proof



SCHÖLLY FIBEROPTIC GMBH  
Robert-Bosch-Strasse 1-3  
79211 Denzlingen, Germany

Phone: +49 7666 908-0  
medical-endoscopy@schoelly.de  
www.schoelly.de/ME

Technical specifications are subject to change. The information is not legally binding. The contents are only for information about our products. Reprint, in whole or in part, is not permitted. Medical devices are only allowed to be marketed and used in countries where they have been approved for sales by regulatory authorities. For information on the available market access please contact us.

MEDICAL ENDOSCOPY  
MPA334-000-01-ME  
Version: 0  
01-Dec-2021

# FLEXILUX<sup>®</sup> NIR FI

## LED Light Source and Light Guide

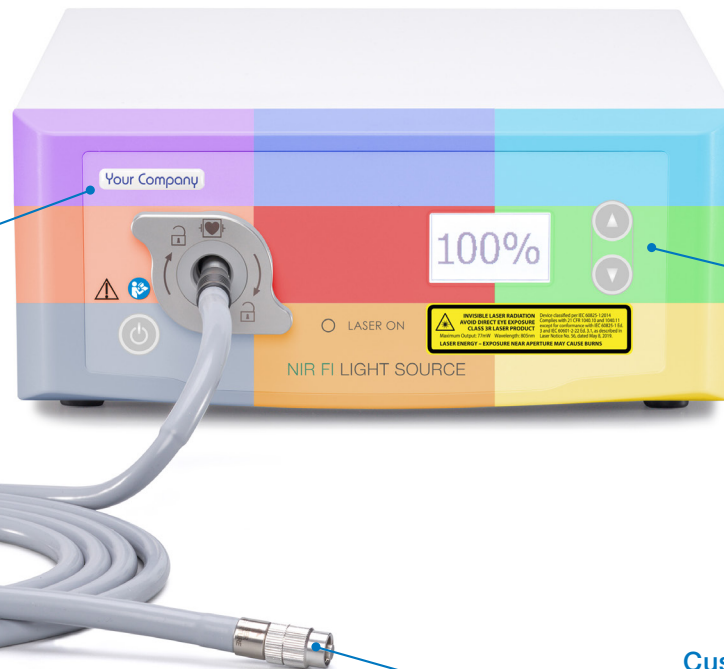


### OEM PRODUCTS - PUT YOUR STAMP ON OUR EXPERTISE

Individualization by  
**customized 3D sticker**

Light Source

- 3D sticker with your company logo on front foil



Individualization by **customized front panel and printing**

Light Source

- Frame style: wave front frame or thin front frame
- Front foil design: color, logo
- Buttons: illumination color, button color

**Customized light guide**

- Laser marking



OEM PRODUCTS

SCHÖLLY FIBEROPTIC GMBH  
Robert-Bosch-Strasse 1-3  
79211 Denzlingen, Germany

Phone: +49 7666 908-0  
medical-endoscopy@schoelly.de  
www.schoelly.de/ME

MEDICAL ENDOSCOPY  
MPA334-000-01-ME  
Version: 0  
01-Dec-2021