

# FLEXIVISION® 10

## Controller Full HD with USB



- Outstanding performance
  - Edge enhancement, automatic gain control (AGC) and dynamic contrast function for best in class performance
  - Latest sensor technology offers: excellent image quality at competitive pricing, no pixel errors due to automatic pixel defect compensation
- Multi-connectivity
  - Camera head full HD zoom
  - Camera head full HD fix focal length
  - Camera head full HD 90° angled
- Time saving and useful camera presets
  - Optimized settings for laparoscopy, arthroscopy, gynecology, urology, ENT, fiberscopes, neuroendoscopy
- Video algorithms
  - Selective Color Enhancement (SCE) - for a much improved representation of the vessels and the tissue structure
  - Smoke reduction - for a better view during dissection technologies (e.g. HF)
  - Grid removal - reduces the honeycomb structure of image bundle endoscopes
- SCHÖLLY MIS-Bus interface for direct light source control via camera head
- Full HD image capturing via USB

### PRIVATE LABEL PRODUCTS - OUR EXPERTISE LABELED WITH YOUR NAME



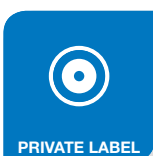
Logo/Labeling



Front frame color



Button color



SCHÖLLY FIBEROPTIC GMBH  
Robert-Bosch-Strasse 1-3  
79211 Denzlingen, Germany

Phone: +49 7666 908-0  
medical-endoscopy@schoelly.de  
www.schoelly.de/ME

# FLEXIVISION® 10

## Controller Full HD with USB



### TECHNICAL DATA

DESCRIPTION	ITEM NUMBER
Controller Full HD with USB image capture and algorithms	95-3930
<b>TECHNICAL DATA</b>	
Operation control panel	On-Off, menu, white balance, photo
Video outputs	High definition: 2 x DVI (1080p), 2 x HD-SDI (1080i)
Remote outputs	2 x 3.5 mm phone jack connectors (to connect recording/printer devices)
Remote inputs	2 x 3.5 mm phone jack connectors (to connect a foot control switch)
Connectivity	SCHÖLLY MIS-Bus interface
Dimensions/Weight	295 x 100 x 355 mm (W x H x D) / 4.39 kg
<b>SYSTEM</b>	
Standard compliance	IEC 60601-1 2 <sup>nd</sup> and 3 <sup>rd</sup>
Directive compliance	CE-mark
Power connection	100 - 240 V AC, 50/60 Hz
Power consumption	0.8 - 0.4 A

### ACCESSORIES

DESCRIPTION	ITEM NUMBER
USB drive 16 GB	DTIG4/16GBCL
USB keyboard, German layout	PS00510
USB keyboard, US layout	PS00511
Foot control switch 1 pole, momentary mono jack plug with IPX7	6226-ACAA-BZZZ-002
Reprocessing tray for camera heads	95-4860

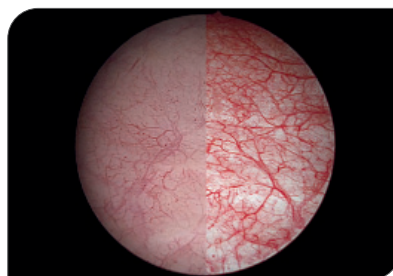
### PLEASE SEE ADDITIONAL DATA SHEETS

FlexiVision Camera Head Full HD Zoom | FlexiVision Camera Head Full HD Fix Focal Length | FlexiVision Camera Head Full HD 90° Angled | FlexiLux 300 LED Light Source | FlexiLux 200 LED Light Source | FlexiVision 10 Controller Full HD | FlexiVision 20 Controller Full HD with USB Image/Video Capture | FlexiVision 20 Controller Full HD with USB Image Capture

### DETAILS



Multi-connectivity



Video algorithms  
(e.g. SCE: Selective Color Enhancement)



MIS-Bus

Technical specifications are subject to change. The information is not legally binding. The contents are only for information about our products. Reprint, in whole or in part, is not permitted. Medical devices are only allowed to be marketed and used in countries where they have been approved for sales by regulatory authorities. For information on the available market access please contact us.

MEDICAL ENDOSCOPY  
MPA309-000-01-ME  
Version: A  
2019-Apr-11